



HALS Update

By Elena Pascarella

HALS is an acronym which stands for Historic American Landscape Survey. (It is not referring to the sociopathic computer on Kubrick's movie 2001 Space Odyssey). HALS documentation is one of three types of historic records maintained at the Library of Congress under the purview of the National Park Service. Other documentations include Historic American Building Surveys (HABS) and Historic American Engineering Records (HAER). HAER surveys have documented many historic roadways throughout the United States including the Merritt Parkway in Connecticut and Skyline Drive in Virginia.

HALS documentation was initiated because historians, architects and landscape architects working for the National Park Service realized that the HABS and HAER survey documentations were not adequately capturing the level of detail found in many historic landscapes.

Rhode Island did not have a HALS liaison to the National Park Service and ASLA national until 2015 when Elena M. Pascarella, RLA, ASLA moved her company Landscape Elements LLC and herself back to her home state of Rhode Island. Having lived in CT for 9 years, Elena had served as the CT Chapter ASLA HALS liaison. In joining the RI Chapter ASLA, Elena agreed to take on this role for the RI Chapter. Elena initiated the first Rhode Island HALS documentation in 2016 as a submission to the 2016 HALS Challenge. The HALS Challenge is an annual competition sponsored by the National Park Service (NPS). Each year the NPS, in conjunction with the Historic Preservation Professional Practice Network of ASLA, selects a theme for the HALS Challenge.

During Spring semester 2016, Elena worked with Professor Richard Sheridan's Junior Landscape Architecture Studio at the University of Rhode Island to prepare a Historic American Landscape Survey (HALS) Documentation for Wilcox Park in Westerly, RI. Landscape Elements had previously worked on the master plan for Wilcox Park in 2006. This park is one of Rhode Island's significant historic landscapes having been designed by two noted 19th Century landscape architects, Warren H. Manning and Arthur Shurcliff. The site is also in a National Register Historic District and is a National Landmark property. Out of 48 submissions for 2016, the documentation for Wilcox Park received an honorable mention award.

The 2017 HALS Challenge theme was "Documenting City or Town Parks". The RI submission for the 2017 HALS challenge



was Eisenhower Park which has a long history as a public park. Tanya Kelly of PlaceStudio in Newport had initiated research for a cultural landscape report on Eisenhower Park. Elena, Tanya and some of Tanya's staff as well as Jon Stevens (Cumberland Planning Director) and Acadia Stevens, a recent Wheaton College graduate in Historic Studies worked collaboratively on this HALS documentation. The submission for Eisenhower Park earned RI its second HALS Challenge merit recognition.

Rhode Island's most recent HALS Challenge submission in 2018 was for Miantonomi Park, Newport, RI. This site was selected as it best fit the 2018 HALS Challenge theme of "Memorialization, Commemorating the Great War". This HALS theme was selected as 2018 was the centennial of the end of World War I (The Great War). The submission was prepared by Elena M. Pascarella and independent consultant Anne Benson of Newport, RI. For more information about HALS, please visit www.facebook.com/HeritageDocumentationPrograms/



President's Letter

During this transitional time for our chapter, the Executive Committee has been working hard to realize the goals that came out of our 2018 Strategic Planning session. We want to engage our membership and offer opportunities for fun and education, support our students and emerging professionals, and advocate for a better future in Rhode Island.

As a landscape architect and urban planner, one advocacy priority that is very important to me is supporting active transportation and creating places that work at the human scale. As landscape architects, we can design places that promote health, safety, connectivity, equity, and sustainability. Our streets are public spaces, and we should design them accordingly.

It's no secret that Rhode Island has [the worst roads and bridges in the country](#). I see this as an incredible opportunity to rebuild our State as a better, safer, and more fun place to live, work, and play. The Fix-It-First approach of our State should prioritize Fixing-It-Better. Every project is a chance to do things differently and design for people instead of cars, and landscape architects are uniquely positioned to make these changes happen.

As the smallest state, Rhode Island has incredible opportunity to become a leader in safe and sustainable active transportation--where better to bike or walk than a state that's 37 miles wide and 48 miles long? The transportation sector is the largest source of emissions, and unfortunately, we seem to be moving in the wrong direction by replacing our infrastructure in-kind rather than in a more sustainable way.

Reaching climate targets in Rhode Island is currently completely optional, and there are no consequences for prioritizing funding for status quo projects that run counter to our goals a state. It's past time to get aggressive about changing our built environment if we want to protect our natural one, and continuing to rebuild a car-centric transportation network is only taking us further from our goals of reduced emissions, increased physical activity, and more sustainable development. These goals will continue to be ignored in favor of business as usual unless they are made enforceable, and the latest way to make that happen lies within [H5444](#), the Rhode Island Global Warming Solutions Act.

If this is an issue you care about, I urge you to contact your elected officials ([find them here](#)) to express your support of mandatory climate goals.

There are many opportunities to get involved with this and the many other exciting things our chapter is up to. Join us at events, like our upcoming Networking Nights--our most recent event at The Guild in Pawtucket was a great way to catch up with friends and colleagues, meet some new ones, and try our hand at team Trivia. We have opportunities of all sizes if you're interested in getting involved, like helping with phone calls to our members, organizing an event you're passionate about, taking over our Instagram account to show off what you're working on, or anything else you can think of.

You can reach out to the Executive Committee at rhodeislandasla@gmail.com, or to me directly at lindsey.a.langenburg@gmail.com. I look forward to (re)connecting with you as we work to grow and improve our chapter!

Best,
Lindsey Langenburg

2018-2019 Rhode Island Chapter American Society of Landscape Architects

Executive Committee

President

Lindsey Langenburg
lindsey.a.langenburg@gmail.com

President Elect

Andrew Pichette
apichette@beta-inc.com

Trustee

Jennifer Judge
jenn@gravellyhillldg.com

Treasurer

Josh Coroa
joshuacoroala@gmail.com

Secretary

Steven D'Ambrosia
sdambrosia@beta-inc.com

Public Awareness Chair

Rebecca Nolan
rebecca.m.nolan@gmail.com

Communications Chair

Beth Greenleaf Kirmmse
Ekirmmse@gilbaneco.com

Member at Large

Richard Sheridan
rsheridan@uri.edu

Member at Large

Kurt van Dexter
kurtvandexter@gmail.com

HALS Liaison

Elena Pascarella
emp@landscapeelementsllc.com



Canada ©153909.

Patents pending.

Receptacles that control waste. Including wastes of time.

INTRODUCING VICTOR STANLEY RELAY™

Never make a half-full collection again. A wireless sensor and service that continuously monitors fill level, system temperature, weight, location and collection status, Relay is invisible to the public eye but you can log in and see how to maximize efficiencies in collection planning scheduling, and routing. Victor Stanley is the only company that manufactures both the sensor and the receptacles that they fit (or retrofit). Innovative thinking we've been known for since 1962.

Contact Charlene Vera at charlenev@victorstanley.com



VICTOR STANLEY RELAY™

STREET LEVEL SENSING™ & WASTE CONTROL SERVICE

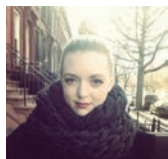


Create a timeless moment.®

VICTORSTANLEY.COM

Meet the 2018-2019 Executive Committee!

Thanks to our members and loyal sponsors for your patience while the executive committee has gone through a transition over the last year. We are grateful for the community of landscape architecture professionals and industry representatives that have supported us in 2018 and hope you will consider renewing support in 2019.



Lindsey Langenburg, President

Lindsey Langenburg is the current president of RIASLA and the newest landscape architect for the Providence Parks Department. Previously, she was the project manager for Rhode Island's first statewide Bicycle Mobility Plan and is looking forward to continuing her work in active transportation as an advocate. Throughout her career she has focused on community engagement and equitable access to public space, and has experience working on a range of projects from reclaiming urban public space through NYCDOT's Plaza Program to high-end residential in New York and Cape Cod. Lindsey has a Bachelor of Science in Landscape Architecture and a Bachelor of Science in Urban Studies from Cornell University, and attended Columbia University GSAPP for Urban Planning. In her personal time, Lindsey enjoys hiking with her two dogs, gardening, baking, and (slowly) renovating an 1888 triple-decker in Pawtucket.



Andrew Pichette, President Elect

Andrew grew up in Rhode Island and has spent much of his life outdoors hiking, camping and exploring which developed a fascination with the landscape. He finds landscape architecture as the perfect balance of his love of nature and all things technical. Following graduation from URI in 2013, Andrew worked in Boston for several years before returning back to Rhode Island to join BETA Group. There, he finds a great blend of landscape, design and engineering in his work. Andrew spends his free time hiking with his wife, Lynsey, and border collie, Cali, taking photos, and brewing beer. He loves experimenting with new and different vegetables in his garden at home. His favorite park is Paley Park in New York City. He is currently spending most of his time in the office working on an Open Space + Trails Master Plan in Franklin, MA and a transit oriented development plan for the town of Mansfield, MA.



Jenn Judge, Trustee

Jenn Judge graduated from the University of Rhode Island in 1993 with a Bachelor of Landscape Architecture and a Minor in Fine Arts. She worked in several landscape architecture firms and multidisciplinary firms located in Philadelphia, Boston and East Providence as well as a design-build company for six years prior to becoming a registered landscape architect in 2006. In 2007 she established her own firm, Gravelly Hill Design Group, LLC where she assists clients with a full range of services from Master Planning, permitting and on-site observation for commercial, municipal, healthcare and residential clients. She has enjoyed volunteering her time as a Healthy Places by Design Committee member for seven years but also as the current Co-Chair for the South Kingstown Bicycle Pedestrian Advisory Committee. Jenn is grateful for the friendships she has formed with colleagues all over the country while serving on the RI Chapter of ASLA. Jenn previously held positions as President, Public Awareness Representative, Member-at-Large, and Secretary and is currently Trustee of our Chapter.



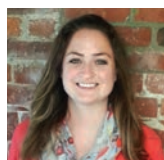
Josh Coroa, Treasurer

Joshua is a Brand Manager at Polycor and a CityWorks fellow at DownCity Design. Joshua is also a CLARB Certified Landscape Architect registered to practice in Rhode Island, Massachusetts, and Connecticut and certified playground safety inspector with over 13 years of experience. His professional experience includes green infrastructure design, sustainability and low impact design; sports field, recreational and park facilities design; streetscape design; post-closure landfill -re-use; mixed-use redevelopment; ecological and wetlands restoration; construction management and oversight. He has extensive experience coordinating complex multi-disciplinary projects from initial concept to completion.



Steven D'Ambrosia, Secretary

Steven was born and raised in Rhode Island. Steven found Landscape Architecture through a serendipitous meeting with an advisor at URI. Landscape Architecture has proven to be a perfect fit for Steven, who enjoys art, nature, design, and trying to make positive changes for people through the built environment. Steven worked at Central Nurseries during his college years gaining valuable plant knowledge. An internship at Gates, Leighton, and Associates in 2007 provided a great opportunity to both ride out the recession and gain experience. Steven continued with GLA through its merger with BETA Group and is currently a Project Landscape Architect in their Lincoln office. When not at the office, Steven can be found spending time with his wife and two girls, listening to music, visiting Vermont, and growing hops.



Rebecca Nolan, Public Relations Chair

Rebecca is originally from Mystic, CT and has recently moved back to Southeastern CT. She is a project manager at Rhode Island School of Design in the office of Research and Partnered Programs and owns her own consulting firm based in Westerly, RI. Rebecca is a licensed Landscape Architect with degrees from Cornell University and Harvard Graduate School of Design. Over the past 12 years, she has worked on a number of planning, design and construction projects throughout the Northeast. Her research and professional interests are focused around historical significance, policy, and distribution of wastewater and stormwater networks.



Beth Greenleaf Kirmmse, Communications

After studying, living and working in RI for many years, Beth (RISD, MLA '04), currently lives and works over the border in southeastern CT. Beth is a registered Landscape Architect working for Gilbane Building Company based in Providence. Drawing from her experience in campus planning, security design, and construction management, Beth provides Program Management services at General Dynamics Electric Boat for the new facilities being constructed to build the Columbia Class submarines. Prior to joining Gilbane's Preconstruction Program Management team, Beth owned her own business, and held Project Manager and Senior Designer positions with Katherine Field and Associates and Searle and Searle Landscape Architects. She has also taught as an adjunct at URI and Boston Architectural College.



Richard Sheridan, Member at Large

Richard has been a professor of landscape architecture at the University of Rhode Island since 2005. Presently he teaches senior and junior level design studios and senior planting design. He is also the Faculty Representative for the URI Chapter of the American Society of Landscape Architects.



Kurt Van Dexter, Member at Large

Kurt is an artist, designer, landscape architect, and art educator. Within landscape architecture, Kurt served as the 2014 president of the Rhode Island Chapter of ASLA, and he is a current member of the RIASLA executive committee as member-at-large. Some of his lesser known achievements include co-founding Park(ing)Day Providence, serving as a founding committee member of Design Week Rhode Island, and serving as a founding committee member for the Rhode Island Design Hall of Fame. Kurt was selected as the 2015 Outstanding Rhode Island Visual Art and Design Educator of the Year. He is the co-founder of a performance-based Bavarian/Austrian folk dance troupe that has continued for four decades, and he also plays the button accordion. Whenever possible, Kurt will seek quiet refuge engaging in projects around his farm, and just as often he can be found hoisting a beer with friends in his own beer garden or at the German Club in Pawtucket. Kurt and his wife Janice (aka Fran), have three adult children who are actively pursuing their own rather unique and varied directions in the world.



Elena Pascarella, HALS Liaison

Elena has worked as a landscape architect in New England for over 35 years. She established Landscape Elements, LLC to provide landscape architectural services with a focus on ecological conservation and cultural resource preservation as both are key elements towards creating sustainable designs. A graduate of the Rhode Island School of Design, Elena furthered her interest in historic landscape architecture through graduate studies at the University of Virginia. She understands landscape stewardship as both a private consultant and public practitioner having served as a landscape architect for both the City of Providence and the State of Rhode Island before she founded Landscape Elements LLC.



OPEN POSITION!

Emerging Professionals Chair

Help strengthen our profession! Nominate a friend, colleague, or yourself today. The strength of RIASLA comes from the dedicated efforts of our member volunteers. Join the team and make a difference.

For questions regarding the roles, responsibilities, and expectations of the positions up for election this year, please contact Lindsey Langenburg, current President, or Jenn Judge, Trustee at rhodeislandasla@gmail.com.



THE POSSIBILITIES
ARE **ENDLESS.**

Our team has been trusted for over 40 years to provide technical expertise and project support in the exploration of segmental paving product options.

Optimizing color, finish, texture and size, we have what it takes to bring your vision to life.

PROJECT: 100 Pier 4. Boston, MA

DESIGN: Mikyoung Kim

PRODUCT: Holland Premier™

Contact your Unilock Representative for samples, product information and to arrange a Lunch & Learn for your team.

UNILOCK®
DESIGNED TO CONNECT.

UNILOCK.COM 1-800-UNILOCK

UPCOMING EVENTS

See updates and details for all events on the RI ASLA calendar at www.riasla.org

March 8-10, 2019 (Fri-Sat) New England Outdoor Living & Garden Show

Waterfire Arts Center, Providence, RI 02908

March 9, 2019 (Sat)

Rhode Island Land & Water Summit

More info: www.landandwaterpartnership.org

URI Memorial Union, South Kingstown, RI 02881

March 13-14, 2019 (Wed-Thurs)

Northeast Hardscape Expo www.nehexpo.com/

Rhode Island Convention Center, Providence, RI

March 21, 2019 (Thur) 7-9p URI Lecture Series

Gina Ford, Agency Landscape + Planning, Boston, MA

Lecture Title: At the Water's Edge: Case Studies in Riverfront and Coastal Restoration

March 26, 2019 (Tues) 6-8pm Networking Event

Location TBD

March 28-30, 2019 (Thurs-Fri) 6th Fabos Conference on Landscape and Greenway Planning

UMass Amherst, Campus Center, Amherst, MA,

April 6, 2019 (Sat) 34th Annual Rhode Island State-wide Historic Preservation Conference

Preservation, Recreation and Sport, East Providence

April 11, 2019 (Thur) 7-9p URI Lecture Series

Pippa Brashear, Director of Planning and Resilience, Scape, NYC

Lecture Title: Resilient Landscapes: Rethinking Urban Open Space in an Era of Rapid Climate Change

April 24, 2019 (Weds) 5:30-8:30p Bowling Event

Breaktime Bowl and Bar 999 Main St, Pawtucket, RI

May 1-4, 2019 (Weds-Sat) ASLA Advocacy Day & Chapter President's Council Spring Meeting

Washington DC

May 14, 2019 (Tues) 5-8pm GreenRI Sustainable Product Showcase

Waterfire Arts Center, Providence, RI 02908



ASHBERY

landscapeforms®

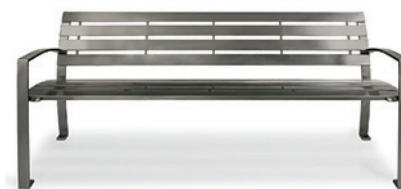
Nadene Worth
RI, MA, ME, VT, NH
800.430.6206 x1325
nadenew@landscapeforms.com

Designed by Robert A. M. Stern

DESIGN. CULTURE. CRAFT.

VICTOR  STANLEY®

VICTORSTANLEY.COM



US Patent D710,625 S; D710,139 S.

Eva Steel Bench

Equal parts style, comfort and sustainability, our new Eva bench is the latest engineering achievement in the Rev-erie Collection. Like other

products in the line, Eva embodies attention to high quality design, craftsmanship and relaxation. Its slim profile and integral armrests make for sleek design. In addition, its exceptionally high recycled steel content is sourced from domestic electric furnace mills. In fact, approximately 98% of the raw material of our steel bar is post-consumer or post-industrial, making green even greener. It's just one more way Victor Stanley helps you create timeless moments.

Charlene Vera at charlenev@victorstanley.com

CONFERENCE UPDATE

ASLA Annual Meeting

This past October, Jenn Judge and Rebecca Nolan represented Rhode Island at the annual meeting in Philadelphia from October 17- 21st. Jenn attended the Board of Trustees (BOT) meeting and Rebecca the Chapter President's Council (CPC) as a proxy for President Lindsey Langenburg. Together they attended nearly 20 education sessions worth a total of 25 credit hours for Landscape Architecture continuing education credits.



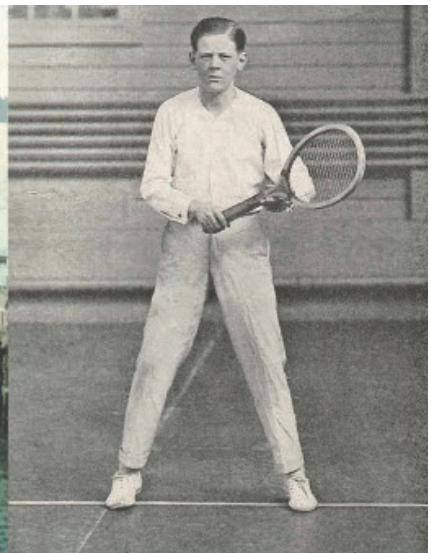
October 2018 at the Philadelphia Convention Center

The CPC meeting highlighted critical advocacy needs such as the Land & Water Conservation funding at risk of defunding by the current administration. Other notable topics covered included recruiting younger members and supporting students and emerging professionals. Both meetings provided excellent networking opportunities and chances to learn from other chapters.

Public Relations Summit

Andrew has recently returned from New Orleans where he attended the National Public Awareness Summit as a proxy for Rebecca Nolan, Public Relations Chair.

The timing of the summit was pretty perfect as the chapter is currently in talks of rebooting the newsletter and website. This has been sparked following the chapters' Strategic Planning exercise in 2018 and a recent rebranding by National ASLA. Not only do these summits light a fire in you and remind you of "why" we're doing what we do but it also gives you the opportunity to see some really great ideas on what's being done in other chapters around the country. Presentations were delivered by both local chapters + national and helped chapters to develop a communications strategy for chapters. It's important for us, as a chapter, to advocate for the profession and provide useful + valuable resources to our members. One presentation that stood out remind us to think about "why" we do what we do as landscape architects. Andrew was able to speak with quite a few of the chapter PA chairs as to how their chapters handle the newsletter, website, awards publications and more. Look out for updates coming soon from RIASLA!



Preservation, Recreation and Sport

THE 34th ANNUAL RHODE ISLAND STATEWIDE HISTORIC PRESERVATION CONFERENCE

Saturday, April 6, 2019 ♦ East Providence



**RHODE ISLAND CHAPTER
AMERICAN SOCIETY OF
LANDSCAPE ARCHITECTS**

PO BOX 8303

CRANSTON, RI 02920

ADDRESS SERVICE REQUESTED