

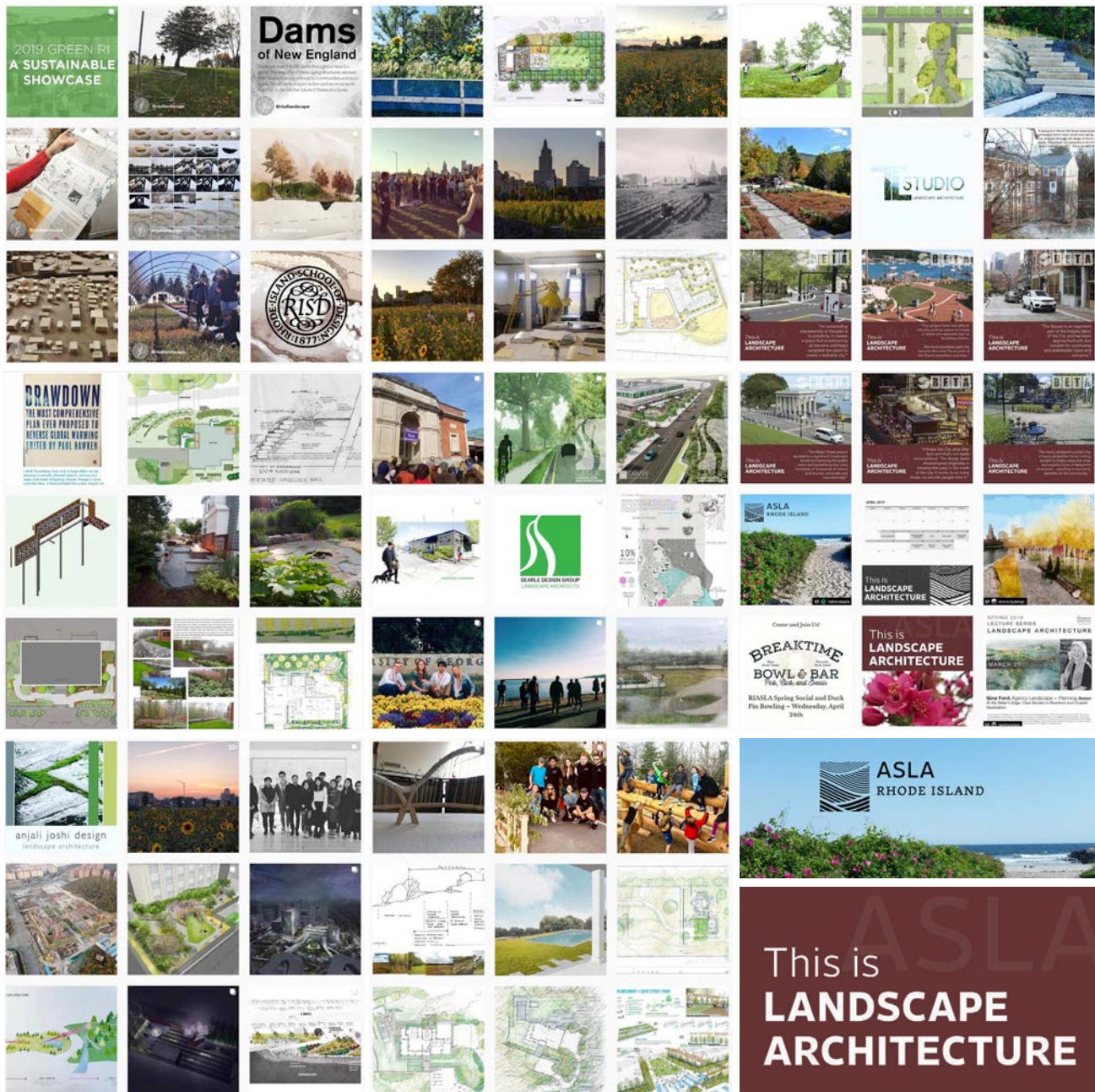


ASLA RHODE ISLAND

CHAPTER NEWSLETTER APRIL-MAY 2019

LANDSCAPE ARCHITECTURE MONTH RECAP

Thank you everyone for making World Landscape Architecture Month (WLAM) a success! WLAM introduces the profession to the public by highlighting landscape architect-designed spaces around the world. Special thanks to our members and students who participated in our instagram takeover from April 17- April 27, 2019.



UPCOMING EVENTS

See updates and details for all events on the RI ASLA calendar at www.riasla.org

May 1-4, 2019 (Weds-Sat) ASLA Advocacy Day & Chapter President's Council Spring Meeting
Washington DC

May 14, 2019 (Tues) 5-8pm GreenRI Sustainable Product Showcase
Waterfire Arts Center, Providence, RI 02908

May 16, 2019 (Thurs) 6pm L.A.R.E. Study Group
Riffraff Bookstore, 60 Valley St #107A, Providence, RI

May 22, 2019 (Weds) 8am BSLA Conference + Design Awards GALA, Northeastern University, Ruggles Center, Boston, MA

May 30, 2019 (Tues) 6pm-8pm PARKing Day Planning Kick-Off Meeting- ALL ARE WELCOME!
Barnaby's, 385 Westminster St, Providence, RI

June 12, 2019 (Weds) 5:30-8:30p Bowling Event
Breaktime Bowl and Bar 999 Main St, Pawtucket, RI

September 12-21 DESIGN WEEK RI- SAVE THE DATE!

September 20, 2019 (Fri) 8am PARKing Day,
Downtown Providence, RI

GREEN RHODE ISLAND

A SUSTAINABLE PRODUCT SHOWCASE

05.14.19
AT THE

THE WATERFIRE ARTS CENTER
5.00-8.30PM TRADESHOW, FOOD, PRIZES
BRING YOUR SAMPLES TO DONATE

[HTTP://WWW.IIDANE.ORG/GREEN-RI-2019](http://www.iidane.org/green-ri-2019)



AIA
Rhode Island



ASLA
RHODE ISLAND



CEU PRESENTATION

5.30-7.00 pm
DESIGNING FOR WELLNESS

Join us for a presentation by Chris Schaffner, Principal and Founder of the Green Engineer, of EMD Sironi's project Sagamore, the first example of WELL Gold and LEED Platinum practices incorporating sustainable and healthy design for site design, building envelope and interiors.
AIA 1.5 LU HSW, ASLA 1 credit, IDCEC 0.1 credit

price per CEU (tradeshow is free)
\$5 for IIDA, AIA, and ASLA members!
\$25 for non-IIDA/AIA members
\$10 for Students

#GREENRI2019

2018-2019 Rhode Island Chapter ASLA

Executive Committee

President

Lindsey Langenburg
lindsey.a.langenburg@gmail.com

President Elect

Andrew Pichette
apichette@beta-inc.com

Past President

Anjali Joshi
anjaliJoshidesign@gmail.com

Trustee

Jennifer Judge
jenn@gravellyhilldg.com

Treasurer

Josh Coroa
joshuacoroala@gmail.com

Secretary

Steven D'Ambrosia
sdambrosia@beta-inc.com

Public Awareness Chair

Rebecca Nolan
rebecca.m.nolan@gmail.com

Communications Chair

Beth Greenleaf Kirmmse
Ekirmmse@gilbaneco.com

Member at Large

Richard Sheridan
rsheridan@uri.edu

Member at Large

Kurt van Dexter
kurtvandexter@gmail.com

HALS Liaison

Elena Pascarella
emp@landscapeelementsllc.com

URI Students Attend LA Bash



On April 3rd, four very tired URI landscape architecture students arrived at the Hartsfield-Jackson Atlanta International Airport at 8:30 AM. This was the first stop of our journey to the University of Georgia in Athens, where we would be taking part in an almost fifty-year tradition of LaBash.

LaBash is a student organized landscape architecture conference tailored to university landscape architecture students to gather and learn about the profession through workshops, lectures, and presentations, made by professionals and people that are influential to the landscape architecture field. Networking opportunities and expose booths were set up throughout the week for students to interact with professional firms, distributors and ASLA members to answer questions and create connections. The speakers for this conference included Shawn T. Kelly, National ASLA President, Barbra Deutsch, Landscape architecture Foundation National President, Kona Gray, President at EDSA, and Thomas Woltz, Principal at NBW.

This year, all the officers of the URI ASLA Student Chapter (Rachel Freehling, President, Alexis Stanhope, Vice President, Karl Alamo, Treasurer and Connor Sullivan, Secretary) had the opportunity to take part in this three-day convention and represent URI, as one of the twenty-seven schools attending. Lectures and workshops that we took part in were Lumion and Hand-Rendering workshops, undergraduate and graduate panels, a green roof presentation by Virginia Russell, and a historic preservation tour of the UGA Campus. Not only was the University of Georgia campus a great backdrop to an amazing event, it was an opportunity for us to look at the designs of other student studio structures to reference and integrate into our studio culture. When we returned back to Kingston, we put together images and information gathered from each of the events to share with other students in the studio and promote involvement for the upcoming LaBash in 2020, which will be hosted at Cornell University. Reflecting on this conference and opportunity, we are so humbled to be able to have participated in such a successful and inspirational event. Without the help of the University of Rhode Island Landscape Architecture Department and faculty, the University of Rhode Island College of Arts and Sciences, and the RI ASLA chapter, we would not have been able to bring back the knowledge and excitement for landscape architecture that we have gained from this event.





Canada © 153909.

Patents pending.

Receptacles that control waste. Including wastes of time.

INTRODUCING VICTOR STANLEY RELAY™

Never make a half-full collection again. A wireless sensor and service that continuously monitors fill level, system temperature, weight, location and collection status, Relay is invisible to the public eye but you can log in and see how to maximize efficiencies in collection planning scheduling, and routing. Victor Stanley is the only company that manufactures both the sensor and the receptacles that they fit (or retrofit). Innovative thinking we've been known for since 1962.

Contact Charlene Vera at charlenev@victorstanley.com



VICTOR STANLEY RELAY™

STREET LEVEL SENSING™ & WASTE CONTROL SERVICE

VICTOR  **STANLEY®**

Create a timeless moment.®

VICTORSTANLEY.COM

RHODE ISLAND IN THE NEWS

POST IN APRIL ISSUE OF ASLA'S THE FIELD:

Healthcare & Therapeutic Garden Design Interview Series: Adam E. Anderson



Image: Master plan for Hengqin Hospital Healing Garden, Zhuhai, China /
image: Adam E. Anderson, Providence, RI.

Adam E. Anderson, ASLA, was one of the speakers for the 2018 Healthcare and Therapeutic Design Professional Practice Network (PPN) Meeting at the ASLA Annual Meeting and EXPO. He is a registered landscape architect and the Founder/Director of Design Under Sky. He also runs the Landscape Architecture Department at Payette Architects. Below is a snippet from the interview with ASLA's The Field. For the entire blog post, please visit <https://thefield.asla.org/2019/03/26/healing-landscapes-design-practice/>

Why do you choose to create healing landscapes? What makes this different or more special for you?

I think we've always known it, but we now have the data that shows how effective exposure to natural elements can be for the healing process. Also, personally, hospitals cause me anxiety, so I like the idea of making them easier to navigate. Crafting a space that directly connects someone to an increased ameliorative process is a nice thought, and landscape design is uniquely able to do so.

What are the current healing landscape projects you are working on?

- XiangYa 5th Hospital in Changsha, now under construction. A 43-acre site backed by a small wooded mountain.
- Hengqin Hospital, Specialty Hospital Campus Plan, and Senior Living Residential Master Plan, which is still in its planning phase.
- Beth Israel Deaconess New Inpatient Building (11,000-sf healing garden and streetscape) in the Longwood Medical area, facing Olmsted's Riverway.
- Yale Psychiatric Hospital Campus, a new psychiatric inpatient/outpatient hospital on a 110-acre wooded and steeply sloped site.
- Boston Children's Hospital-Satellite Hospital in Waltham, Massachusetts.

What is your vision for future healthcare and therapeutic design?

I would like to see hospitals take in the phenomenological qualities of what we associate with nature. Payette is doing some of this in terms of natural light and ventilation, but more could be done to push the biological into the biomedical, disintegrating the line between the living landscape and interior. This will take time, but understanding an ecology's ability to heal itself, and tapping into that, can be advantageous. The other thing to remember is that there needs to be a spectrum of "non-medical" spaces to accommodate the varying circumstances of patients, family, and staff.



ASHBERRY

landscapeforms®

Nadene Worth
RI, MA, ME, VT, NH
800.430.6206 x1325
nadenew@landscapeforms.com

Designed by Robert A. M. Stern

DESIGN. CULTURE. CRAFT.

POST IN MAY ISSUE OF ASLA'S THE FIELD: The Rhode Island Landscape Survey: An Overview

Jenn Robinson, a Research Fellow with Preservation Society of Newport County and Elena Pascarella ASLA of Landscape Elements LLC have prepared the following blog post that will appear in the May issue of ASLA's The Field!

In October 2017 Brent Runyon, Executive Director of the Providence Preservation Society, assembled an ad hoc committee representing various historic organizations and groups in Rhode Island. The committee was comprised of the following:

Brent Runyon, Executive Director, Providence Preservation Society
Rachel Robinson, Director of Preservation, Providence Preservation Society
Jim Donahue, Curator of Historic Landscapes & Horticulture, The Preservation Society of Newport County
Kaity Ryan, Deputy Chief of Staff, The Preservation Society of Newport County
Elena Pascarella, RLA, ASLA, Landscape Architect and HALS Liaison for RI Chapter ASLA
Karen Jessup, PhD, Landscape Architectural Historian and former professor at Roger Williams University, Bristol, RI

The purpose of this committee was to develop ideas for initiating a new survey of Rhode Island landscapes. The most recent survey of Rhode Island landscapes was Historic Landscapes of Rhode Island, compiled in the 1990s and published in 2001 by the Rhode Island Historical Preservation and Heritage Commission.

Given recent demands for developing open spaces, particularly in the Rhode Island cities of Providence and Newport, the committee felt an updated survey of significant landscapes was warranted.

The purpose of such a survey or inventory would be educational, helping owners or stewards of significant historic open spaces and landscapes to understand their properties and to apply appropriate maintenance and improvement schemes. Endangered landscapes could be identified, and potentially result in HALS documentation. The survey would be initially focused on Newport and Providence to establish a template from which other community surveys could be developed at a future time. Larger initiatives may also result, including:

- An Historic Landscape Trail (working with RI tourism)
- A statewide "What's Out There" public program similar to that of The Cultural Landscape Foundation

In 2018, Ms. Jennifer Robinson was awarded an Historic Landscapes Research Fellowship by The Preservation Society of Newport County. Her project represents the Society's first collaborative fellowship with the Providence Preservation Society. A selection from the interview is below:

What was the rationale for selecting Providence and Newport as the "template" communities for this landscape survey?

Both Providence and Newport contain some of the state's most treasured and recognizable designed and cultural landscapes – Roger Williams Park, Benefit Street, the tennis courts at the Newport Casino, and the grounds of the Newport Mansions, among many others. Both cities also contain sites that span the breadth of American landscape history, and that were touched by some of landscape architecture's most notable figures, including



Image: Richard Upjohn's perspectival illustration of Kingscote, circa 1840. Avery Architectural Library, Columbia University. NYDA.1000.011.00761



Image: Layout of Kingscote's grounds, 1907. From Atlas of the City of Newport and the Towns of Middletown and Portsmouth, Rhode Island, L.J. Richards, Springfield, MA



Image: Illustration from Providence Parks Association tract, "The Great Storm of 1815." From "Parks of Leading Cities of This Country; Their Advantages" and "Parks of Providence. The Cove Park. Terminal Facilities." No. 7. Providence: J.A. & R.A. Reid, 1887. Courtesy Providence Public Library Special Collections, Providence, RI.

Andrew Jackson Downing and Frederick Law Olmsted. Almost two decades have passed since a state-wide survey was completed in 2001, and it is important to revisit these communities as they are home to the state's highest concentrations of historic resources. Our working assumption is that if we can create a model that will work in Providence and Newport, that model can be scaled and used throughout the state.

You considered a number of significant landscapes in both Newport and Providence for this survey. What led you to focus on Kingscote in Newport?

Several of the Preservation Society's larger estates in Newport have been the subject of landscape research and restoration in recent years. Most notably, perhaps, is the development of a Cultural Landscape Report and subsequent rehabilitation of an Ernest Bowditch-designed serpentine path at *The Breakers* (currently underway). This renewed investment in landscape stewardship has led the Society to continue intensive research at its other properties. Kingscote is unique because of its position as one of the earliest Bellevue Avenue estates. Built between 1839-1841, its Picturesque landscape is sometimes attributed to Andrew Jackson Downing. Although I have found that this conclusion is nearly impossible to verify, Kingscote's landscape certainly exhibits the hallmarks of Downing-esque design, including an oblique entrance, winding paths, a wide piazza, and irregularly-spaced trees. I have continued to consider the sources that may have prompted this design – for example, Downing's journal, *The Horticulturist* – and the local landscape gardeners who may have contributed to its layout.

What are some interesting or unexpected findings that you have noted so far in Providence?

In Providence, one of the most interesting aspects of studying these sites is their relevance to current issues. For example, the effects of coastal storms were very clearly recognized in the past – a subject that is being revisited as

we consider the impacts of climate change. Concerns about storm drainage and tidal surge around Downtown Providence and near present-day Kennedy Plaza were being discussed in the 19th century, and were expressed in printed material promoting the development of new park land.

Additionally, India Point Park is important as a landscape of the late 20th century – especially interesting as preservationists have begun to reconsider sites of the recent past. India Point is uniquely situated as an early manifestation of waterfront revitalization in Providence, which ultimately resulted in the development of Waterplace Park in the 1990s.

For the full interview, please visit <https://thefield.asla.org/>

VICTOR  STANLEY®

VICTORSTANLEY.COM



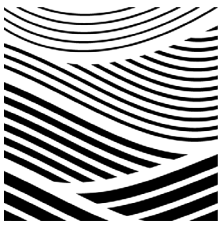
US Patent D710,625 S; D710,139 S.

Eva Steel Bench

Equal parts style, comfort and sustainability, our new Eva bench is the latest engineering achievement in the Rev-erie Collection. Like other

products in the line, Eva embodies attention to high quality design, craftsmanship and relaxation. Its slim profile and integral armrests make for sleek design. In addition, its exceptionally high recycled steel content is sourced from domestic electric furnace mills. In fact, approximately 98% of the raw material of our steel bar is post-consumer or post-industrial, making green even greener. It's just one more way Victor Stanley helps you create timeless moments.

Charlene Vera at charlenev@victorstanley.com



**RHODE ISLAND CHAPTER
AMERICAN SOCIETY OF
LANDSCAPE ARCHITECTS**
PO BOX 8303
CRANSTON, RI 02920
ADDRESS SERVICE REQUESTED



THE POSSIBILITIES
ARE **ENDLESS.**

Our team has been trusted for over 40 years to provide technical expertise and project support in the exploration of segmental paving product options.

Optimizing color, finish, texture and size, we have what it takes to bring your vision to life.

PROJECT: 100 Pier 4. Boston, MA
DESIGN: Mikyoung Kim
PRODUCT: Holland Premier™

Contact your Unilock Representative for samples, product information and to arrange a Lunch & Learn for your team.

UNILOCK®
DESIGNED TO CONNECT.

UNILOCK.COM 1-800-UNILOCK